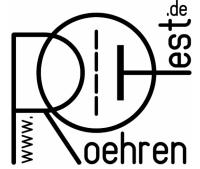


RoeTest - das Computer-Röhren-Messgerät -

professional tube-testing-system (c) Helmut Weigl www.roehrentest.de



Client/Server Installation (Network) from Software Version 10.3.0.0 on

Meanwhile there are some RoeTest users that own more than one RoeTest or users that want to access the RoeTest data from different computers.

Beginning with version 10.3.0.0 the RoeTest software is now network compatible. You can install the software to a network drive that can be accessed by multiple clients. The database program as well as the measuring software can access that network drive.

Advantages:

- Clients work with a common data base. When a user updates the tube data base the changes are also available to the other users. When a user enters a tube to the tube stock data base all other users can see this change.
- Any number of users/clients can work concurrently with the databases (the dbf-files).
- Overwrite protection: When a data set is being processed by a user this data set is locked for this user. This prevents accidental corruption/overwrite by another user (for the dbf-files)
- when a software update is required the software needs only be installed to one location and all users can use the new version

Disadvantages:

Depending on the network speed data accesses can be slower compared to a single-user installation. A test in my network (100 Mbit LAN on cable and a good quality WLAN connection) did not show noticeable speed disadvantages.

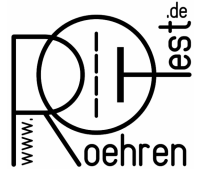
A few files may only be processed by a single user (e.g. the manufacturers list). As these files are only rarely changed this should not present a serious disadvantage.

Hint:

I am not able to give you any support creating a Windows network. There are too many possibilities regarding the various Windows-Versions. Please ask your network administrator or refer to appropriate literature for this case.

RoeTest - das Computer-Röhren-Messgerät -

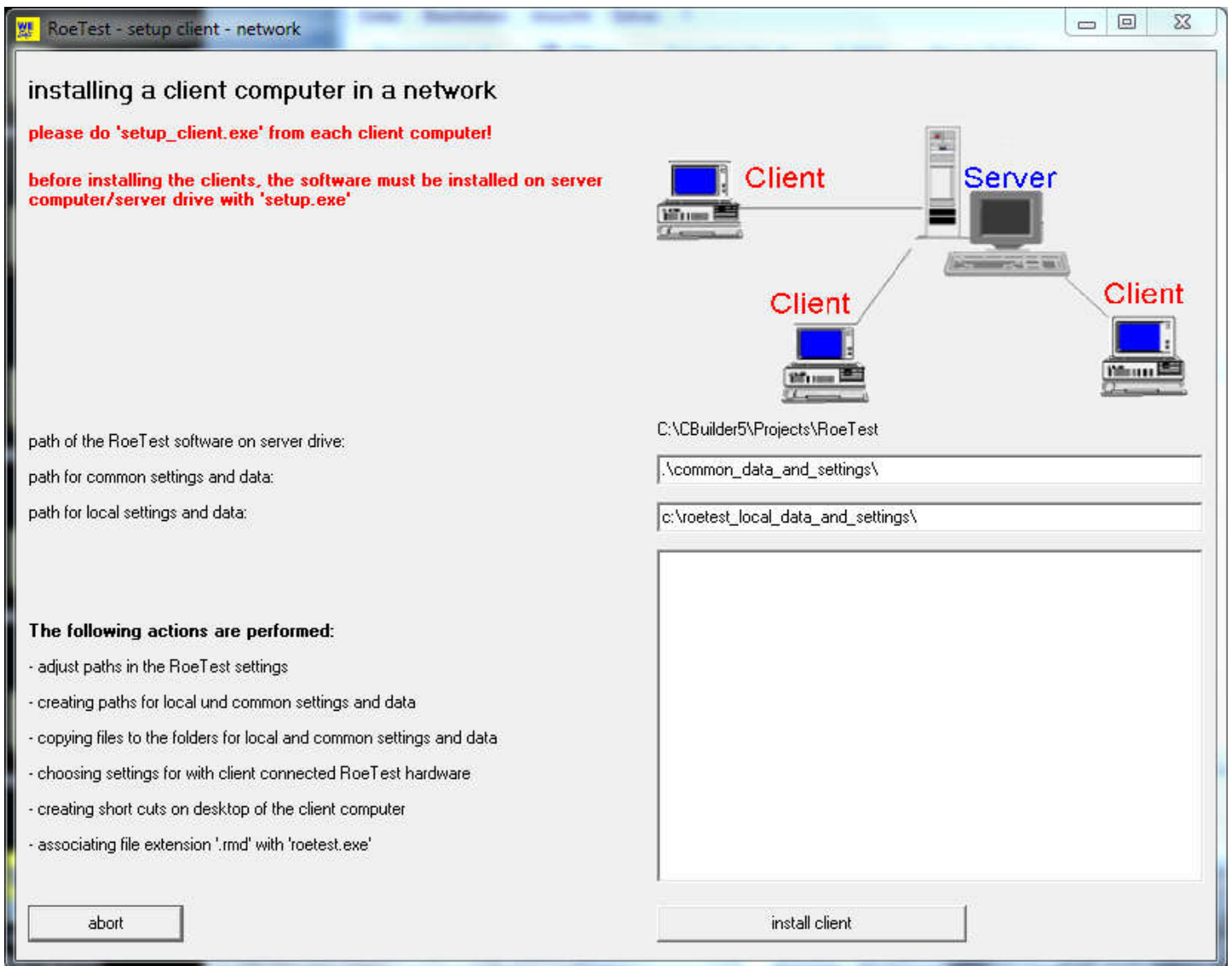
professional tube-testing-system (c) Helmut Weigl www.roehrentest.de



Installation:

1. Install the software to a **Network-Drive** using **setup.exe**. Installation can be performed from a server- or a client- work station. When installing from a client work station full access to the installation directory (read, write, delete etc.) is required.

2. Next **on each client work station** the installation directory on the network drive has to be opened and the program '**setup_client.exe**' must be executed:



Please do not change the predefined path settings.

Info: Files that need to be local to the respective work station (RoeTest hardware settings, printer settings etc.) are stored on the client work station at: 'c:\roetest_local_data_and_settings\'.

The RoeTest software may then be started using the usual icons on the client's desktop.