

RoeTest - Computer Tube Tester / Tube Measuring System

(c) - Helmut Weigl www.roehrentest.de

Installing the Software (PC-Software RoeTest and Database Files):

when installing from my web page

1. Click on the following link on my web page www.roehrentest.de/download:

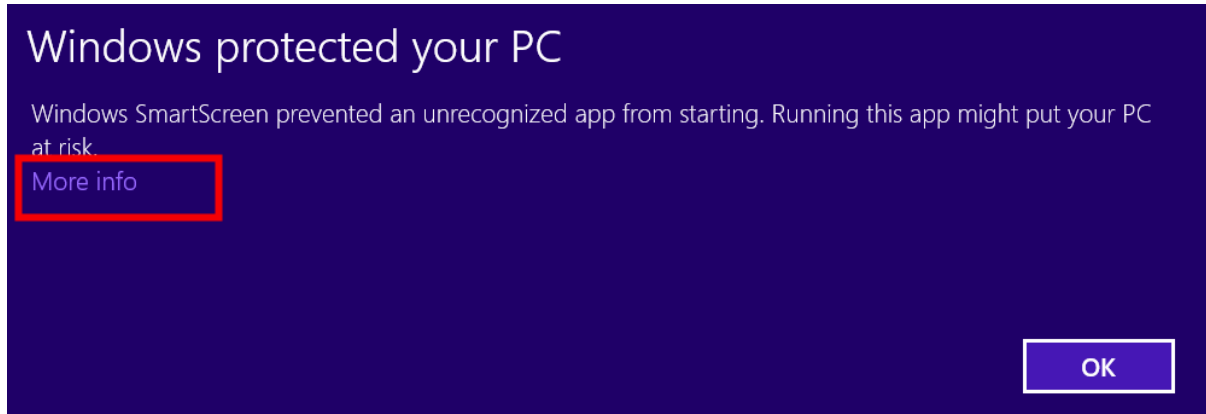
Download-Bereich: (download area)	
Software:	
 deutsch	 english
Hier gibt es die jeweils aktuelle Voll-Version der PC-Software zum Download (incl. Röhrendatenbank):	Here you find the free download of the today Software (full version including the tube data base).
roetest_setup.exe <-download (ca. 50 MB) (version 10.2.8.0, 15.02.2020)	

Depending on your browser you will be asked if the file shall be executed or downloaded. In the latter case you have to run the file after downloading.

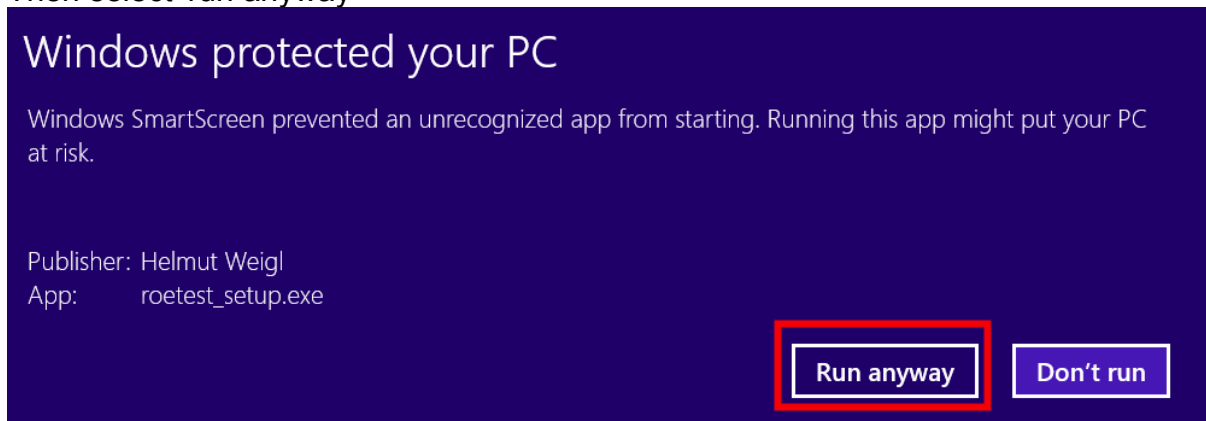


2. If Smartscreen is enabled on newer Windows versions the following message will be displayed:

In this case please select 'more info'

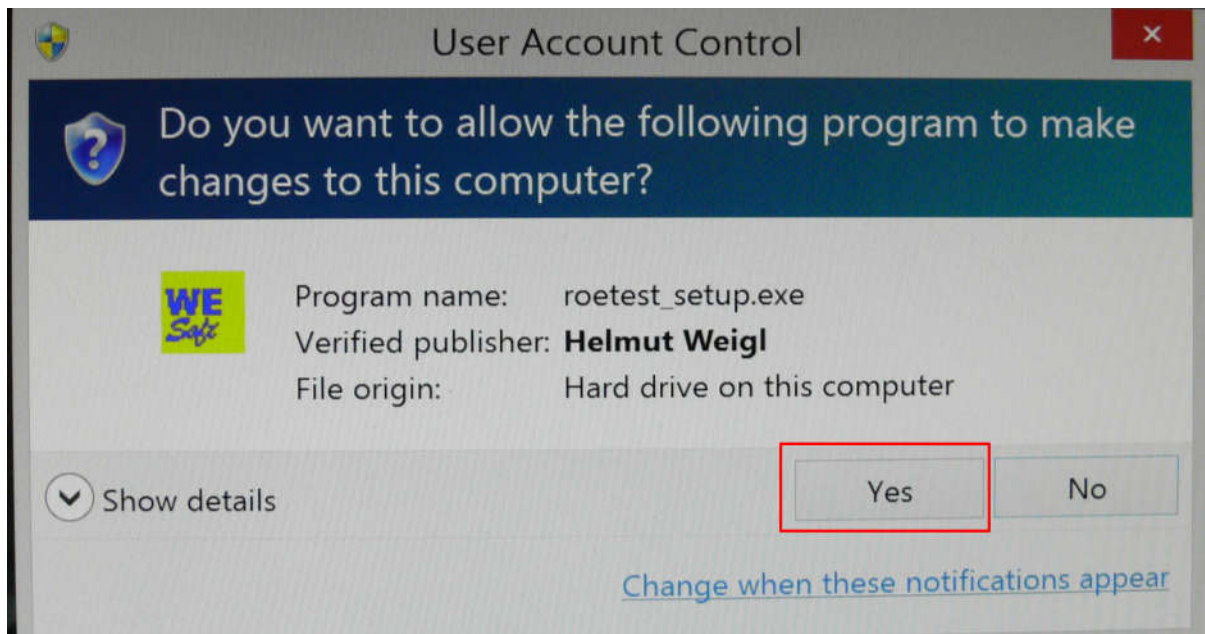


Then select 'run anyway'



This message may also show up when starting the program for the first time. That depends on your Windows version and your settings.

3. The new Windows versions require your confirmation that you really want to execute the setup program.

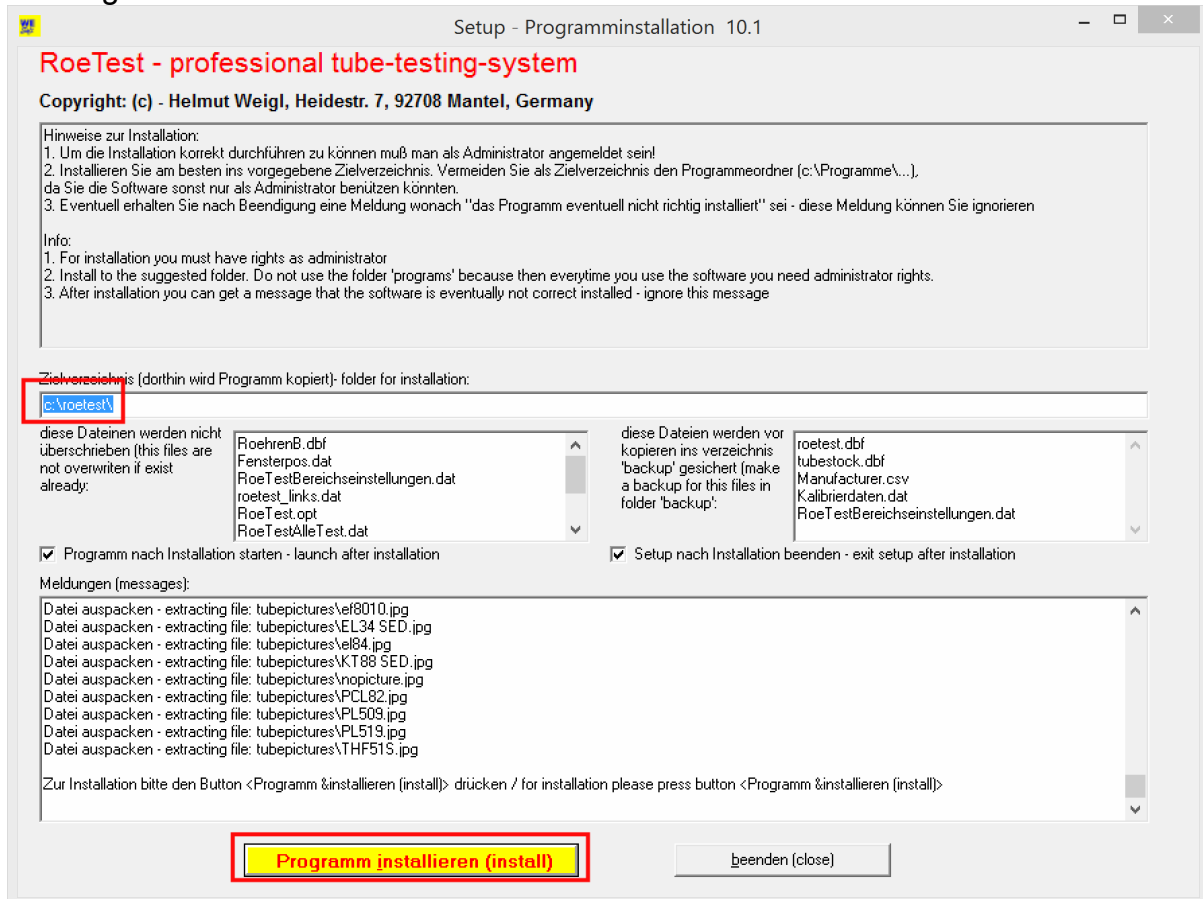


The setup program will unpack zipped files automatically.

4. Then press the button <Programm installieren (install)>

Notes regarding the newer Windows versions (Vista, Windows7, Windows8, Windows10):

For installing the software you should have administrator rights. Please do not install the software to the “programs”-directory but to the suggested one (“c:\roetest”). This is required as otherwise Windows does not allow write access to the files for standard users (non administrators) and there will be error messages.



After the program has been installed the measuring software will start automatically.

If this is a first-time installation you will be asked for the language to use, your name or initials and the RoeTest hardware version. If you don't have the hardware, select the newest hardware version ('Preset RoeTest V10').

Subsequent installations/Updates

You can use an already existing installation directory and just install the software to that directory. The settings for your device remain unchanged.

Note regarding Tube data:

If you enter own tube data (or correct errors) it is wise to send me your database

file in advance to an intended software update. Then I can combine my database file with your data and provide them to all users (yours included). How to send the database is described in the file "how can you contribute to the tube data database.pdf".