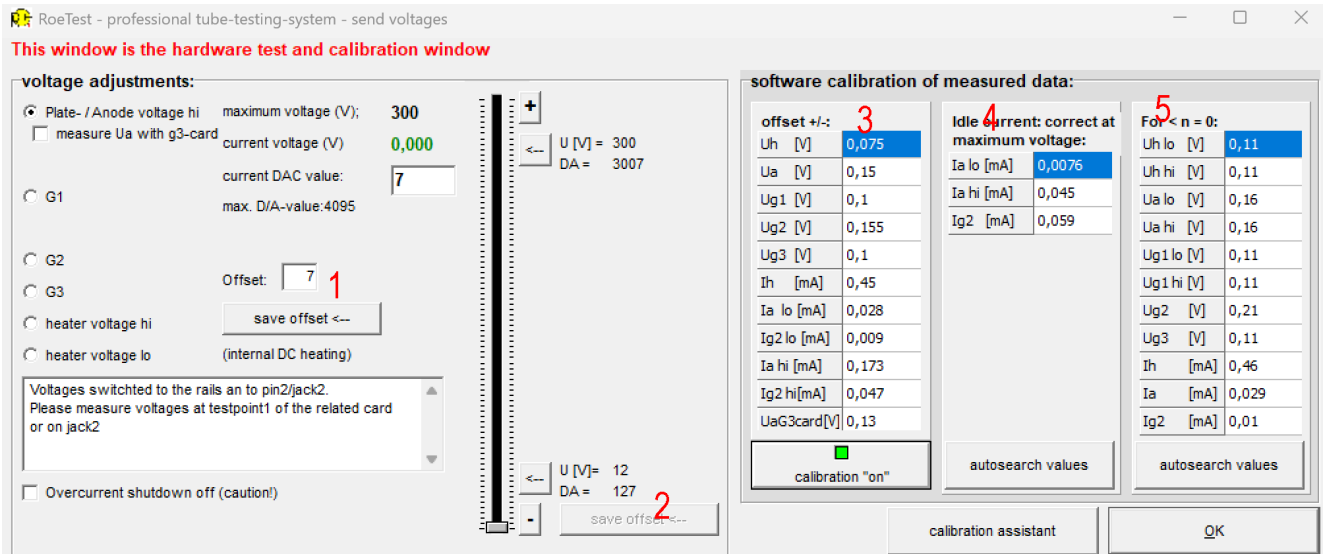
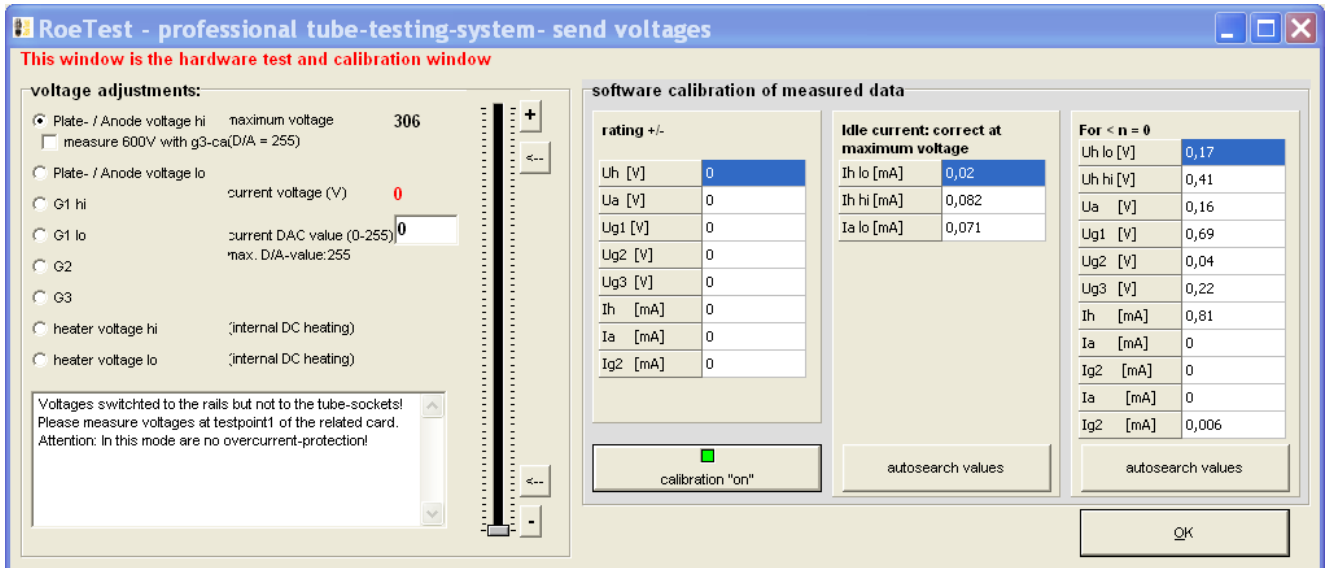


Options – Posting voltages:

Screen at current versions:



Screen at hardware <= V8



Used for testing and adjustment of the hardware (voltage sources and measuring instruments). Voltages switched to the rails an to pin2/jack2. Please measure voltages at testpoint1 of the related card or on jack2

1. Offset value for sending voltage of the card (manual input in the edit field and store with button)
2. select offset for sending voltage of the card by slider. And store with button.
3. offset values for measurement. At correct hardware, this values should be small.
4. Correction idle current at max voltages (automatic calibrating by button)
5. Measured values smaller than the entry are interpreted as 0. In the idle state of the device, wobbling of the pointers is suppressed.

Caution:

The software short circuit test can be disabled with this option. Please avoid short circuits.

Please do not use low resistors at full anode current. The MOS-FETs could be damaged.

For adjusting the currents use a high resistive load. See also the adjustment instructions in the building instructions, best you use the calibration box and the calibration assistant.